



OPERATION & CARE MANUAL

ivNow-1
ivNow-2
ivNow-3
ivNow-4
ivNow-5
ivNow-6

120V

ivNow®



ivNow-1 countertop module



ivNow-3 pedestal-mounted countertop module

**INJECTION/IV IRRIGATION FLUID
BAG WARMING MODULE**

OPERATION & CARE

INDEX

Transport and Storage	1
Delivery	1
Unpacking	1
Safety Procedures and Precautions	2

Installation

Preparation	3
120V Electrical Information	3
General Information	4
Dimension Drawings & Configurations	5
Options & Accessories	6

Operating Instructions

Control Features	7
Installation	8
Operation Procedures	9

Care and Cleaning

Cleaning and Preventative Maintenance	10
---	----

Troubleshooting Guide 11

Service Parts Lists and Drawings 12

Wire Diagrams (Always refer to the wire diagram(s) included with the unit for most current version.)

Warranty

Transportation Damage and Claims	Back Cover
Limited Warranty	Back Cover

FLUID WARMING MODULE

TRANSPORT AND STORAGE

Transport and Storage Environmental Conditions (not to exceed 15 days)

- Ambient temperature range of -40° to +159°F (-40° to +70°C)
- Relative humidity range of 10% to 100%, including condensation
- Atmospheric pressure range of 50KPa to 106KPa

UNPACKING AND SET-UP

DELIVERY

The Pedigo Fluid Warming Module has been thoroughly tested and inspected to insure only the highest quality unit is provided. Upon receipt, check for any possible shipping damage and report it at once to the delivering carrier. *See Transportation Damage and Claims section located in this manual.*

This appliance, complete with unattached items and accessories, may have been delivered in one or more packages. Check to ensure that all standard items and options have been received with each model as ordered.

Save all the information and instructions packed with the appliance. Complete and return the warranty card to the factory as soon as possible to ensure prompt service in the event of a warranty parts and labor claim.

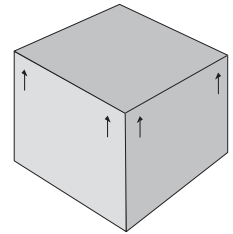
This manual must be read and understood by all people using or installing the equipment model. Contact the Pedigo service department if you have any questions concerning installation, operation, or maintenance.

NOTE: All claims for warranty must include the full model number and serial number of the unit.

UNPACKING

1. Carefully remove the appliance from the carton.

NOTE: Do not discard the carton and other packaging material until you have inspected the unit for hidden damage and tested it for proper operation.



2. Read all instructions in this manual carefully before initiating the installation of this appliance.

DO NOT DISCARD THIS MANUAL.

This manual is considered to be part of the appliance and is to be provided to the owner or manager of the business or to the person responsible for training operators.

Additional manuals are available from the Pedigo service department.

3. Remove all protective plastic film, packaging materials, and accessories from the appliance before connecting electrical power.

SAFETY PROCEDURES AND PRECAUTIONS

Knowledge of proper procedures is essential to the safe operation of electrically energized equipment. In accordance with generally accepted product safety labeling guidelines for potential hazards, the following signal words and symbols may be used throughout this manual.



DANGER

Used to indicate the presence of a hazard that **will** cause severe personal injury, death, or substantial property damage if the warning included with this symbol is ignored.



WARNING

Used to indicate the presence of a hazard that **can** cause personal injury, possible death, or major property damage if the warning included with this symbol is ignored.



CAUTION

Used to indicate the presence of a hazard that can or will cause minor or moderate personal injury or property damage if the warning included with this symbol is ignored.

CAUTION

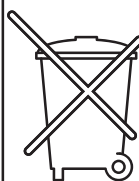
Used to indicate the presence of a hazard that can or will cause minor personal injury, property damage, or a potential unsafe practice if the warning included with this symbol is ignored.

NOTE:

Used to notify personnel of installation, operation, or maintenance information that is important but not hazard related.

1. Pedigo fluid warmers are **ONLY** intended for warming medical solutions for irrigation and injection prior to their use. Please refer to the labeling of the manufacturer of the products to be warmed regarding the recommended temperature and the duration of warming. No other use for this device is authorized or recommended.
2. This device is intended for use in commercial establishments where all operators are familiar with the purpose, limitations, and associated hazards of this device. Operating instructions and warnings must be read and understood by all operators and users.
3. Any troubleshooting guides, component views, and parts lists included in this manual are for general reference only and are intended for use by qualified technical personnel.
4. This manual should be considered a permanent part of this device. This manual and all supplied instructions, diagrams, schematics, parts lists, notices, and labels must remain with the device if the item is sold or moved to another location.

NOTE



For equipment delivered for use in any location regulated by the following directive:

DO NOT DISPOSE OF ELECTRICAL OR ELECTRONIC EQUIPMENT WITH OTHER MUNICIPAL WASTE.

PREPARATION

Before operating the module(s), clean the exterior of the unit with a damp cloth and a general hospital cleaner (isopropyl alcohol).

120V ELECTRICAL INFORMATION

The power specifications are located on the unit identification nameplate. This nameplate is permanently attached to the unit and must be located to verify power requirements.



POWER REQUIREMENTS - ivNow-1

120 V.A.C. — 60 Hz, 1 ph
150 Watts, 1.3 amps
Safety Class I Equipment
Mode of operation: Continuous



NEMA 5-15P
15A - 125V Plug
Hospital Grade

POWER REQUIREMENTS - ivNow-2

120 V.A.C. — 60 Hz, 1 ph
300 Watts, 2.5 amps
Safety Class I Equipment
Mode of operation: Continuous



NEMA 5-15P
15A - 125V Plug
Hospital Grade

POWER REQUIREMENTS - ivNow-3

120 V.A.C. — 60 Hz, 1 ph
450 Watts, 3.8 amps
Safety Class I Equipment
Mode of operation: Continuous



NEMA 5-15P
15A - 125V Plug
Hospital Grade

POWER REQUIREMENTS - ivNow-4

120 V.A.C. — 60 Hz, 1 ph
600 Watts, 5.0 amps
Safety Class I Equipment
Mode of operation: Continuous



NEMA 5-15P
15A - 125V Plug
Hospital Grade

POWER REQUIREMENTS - ivNow-5

120 V.A.C. — 60 Hz, 1 ph
750 Watts, 6.3 amps
Safety Class I Equipment
Mode of operation: Continuous



NEMA 5-15P
15A - 125V Plug
Hospital Grade

POWER REQUIREMENTS - ivNow-6

120 V.A.C. — 60 Hz, 1 ph
900 Watts, 7.5 amps
Safety Class I Equipment
Mode of operation: Continuous



NEMA 5-15P
15A - 125V Plug
Hospital Grade

UL FILE #	<input type="text"/>	MADE IN USA
MODEL	<input type="text"/>	
WATTS	<input type="text"/>	
VOLTS	<input type="text"/> 1 PH <input type="text"/> Hz	
SERIAL#	<input type="text"/>	

Grounding reliability can only be achieved when equipment is connected to an equivalent receptacle marked "Hospital Grade."



Protective Earth
Ground Symbol

Medical Equipment classified by Underwriters Laboratories with Respect to Electrical Shock, Fire and Mechanical Hazards only, in Accordance with UL 60601-1 and CAN/CSA C22.2 No. 601.1.



UL File No.
E201645



ATTENTION
Consult accompanying
documents



DANGER



ENSURE POWER SOURCE
MATCHES VOLTAGE STAMPED
ON APPLIANCE NAMEPLATE.



DANGER



DO NOT use this warming cabinet
in the presence of flammable
anesthetic mixture (with air or
with oxygen or nitrous oxide).
THIS COULD RISK AN EXPLOSION!

CAUTION

THIS UNIT HAS NOT BEEN
APPROVED FOR WARMING OF
BLOOD OR BLOOD PRODUCTS.



Hazardous Voltage Present

GENERAL INFORMATION

The ivNow fluid warmer quickly warms and maintains the temperature of injection/intravenous and irrigation solutions prior to their use. The specially contoured warming module cradles solution bags in 0.5, 1, 2 & 3 liter sizes. 3-liter bag capacity available on ivNow-1, ivNow-2, & ivNow-3 with an additional adapter. Individual ivNow units cannot be stacked in the field. Multiple cavity units are available from the factory in the configurations below. The unit is controlled by one (1) power switch and individual electronic controls with L.E.D. display for each cavity. The control can easily be set to display temperatures in Celsius or Fahrenheit. A sensor in the heating plate detects the presence of a bag and engages the heating mechanism to quickly begin warming the fluid. Two (2) temperature sensors work in unison to precisely and continuously read the temperature of the bag and another sensor monitors the plate temperature. A green ready light will illuminate when fluid is within $\pm 0.2^{\circ}\text{C}$ ($\pm 0.3^{\circ}\text{F}$) of the set point temperature. The heater will reengage as necessary to maintain the temperature within $\pm 0.2^{\circ}\text{C}$ ($\pm 0.3^{\circ}\text{F}$) of the set point. The electronic control monitors the length of time the bag has been held at temperature, beginning when the bag reaches set point temperature. A status button will display the time the fluid has been held at temperature.

DANGER



AT NO TIME SHOULD THE INTERIOR OR EXTERIOR BE STEAM CLEANED, HOSED DOWN, OR FLOODED WITH WATER OR LIQUID SOLUTION OF ANY KIND. DO NOT USE WATER JET TO CLEAN.



SEVERE DAMAGE OR ELECTRICAL HAZARD COULD RESULT.

WARRANTY BECOMES VOID IF APPLIANCE IS FLOODED

NOTE: In the event that fluid should spill inside the module, unplug the unit to prevent an electrical shock hazard. Wipe excess fluid from module immediately. Refer to qualified service personnel. Qualified service personnel should remove the module control and remove any remaining liquid. Perform necessary hospital electrical safety checks before returning the unit to operation.

CAUTION

THIS UNIT HAS NOT BEEN APPROVED FOR WARMING OF BLOOD OR BLOOD PRODUCTS.



WARNING

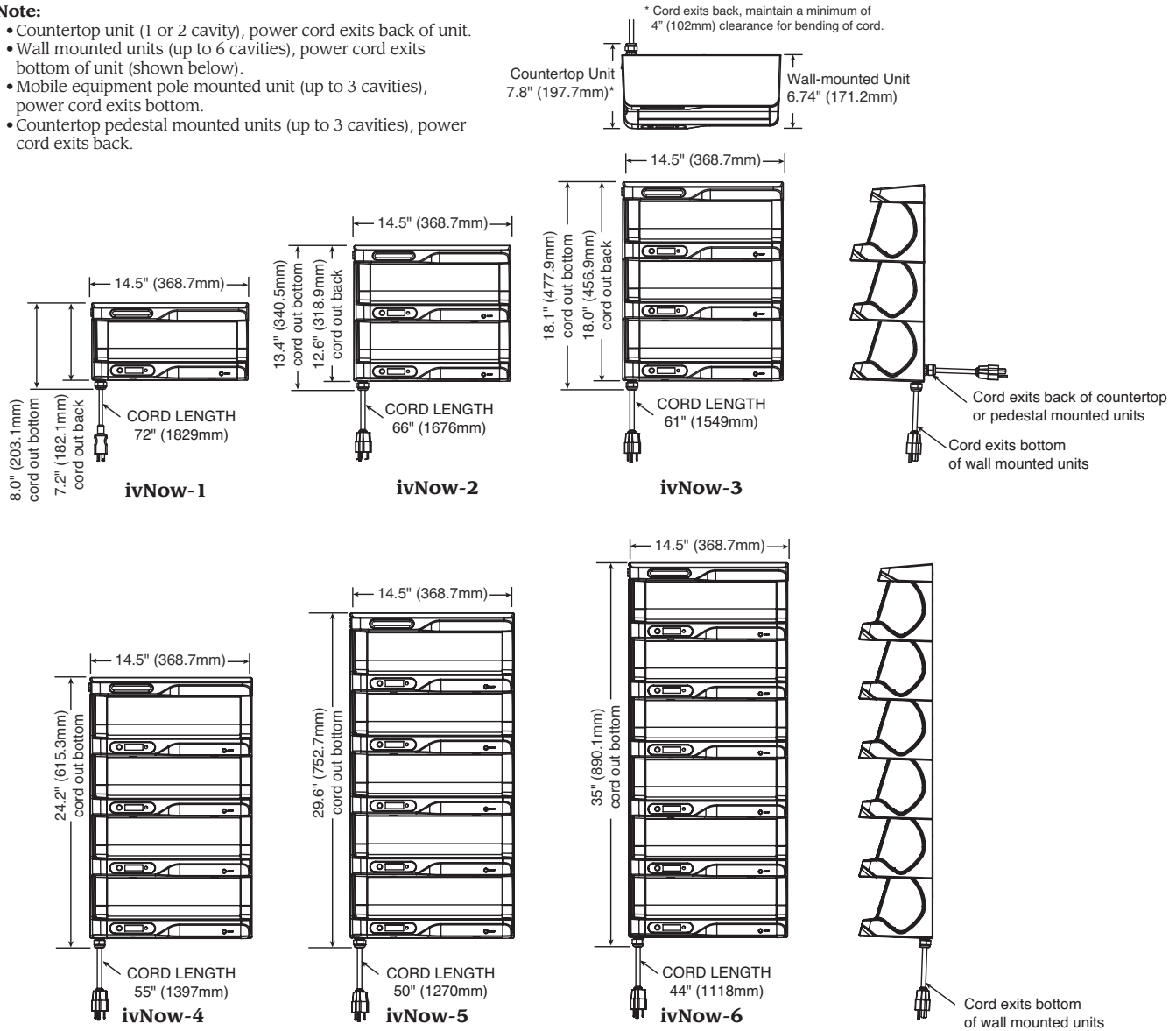
REFER TO FLUID MANUFACTURER'S LABELING FOR RECOMMENDED WARMING PROCEDURES

ivNow DIMENSIONS

Note:

- Countertop unit (1 or 2 cavity), power cord exits back of unit.
- Wall mounted units (up to 6 cavities), power cord exits bottom of unit (shown below).
- Mobile equipment pole mounted unit (up to 3 cavities), power cord exits bottom.
- Countertop pedestal mounted units (up to 3 cavities), power cord exits back.

* Cord exits back, maintain a minimum of 4" (102mm) clearance for bending of cord.



ivNow CONFIGURATIONS

Note: Individual ivNow units cannot be stacked in the field. Multiple cavity units are available from the factory in the configurations below. 3-liter bag capacity available on ivNow-1, ivNow-2, & ivNow-3 with an additional adapter.

ivNow-1 (one (1) bag capacity) can be placed directly on a countertop, mounted on an optional countertop pedestal stand, mounted on a mobile equipment pole stand, or mounted on a wall using brackets*.

ivNow-2 (two (2) bag capacity) can be placed directly on a countertop, mounted on a countertop pedestal stand, or mounted on a wall using mounting brackets*.

ivNow-3 (three (3) bag capacity) must be mounted on a countertop pedestal stand, a heavy duty mobile equipment pole stand, or on a wall using mounting brackets*.

ivNow-4 (four (4) bag capacity) must be mounted on a wall using mounting brackets*.

ivNow-5 (five (5) bag capacity) must be mounted on a wall using mounting brackets*.

ivNow-6 (six (6) bag capacity) must be mounted on a wall using mounting brackets*.

*Mounting hardware sold separately.

ivNow OPTIONS AND ACCESORIES

ivNow-1

- **COUNTER TOP UNIT** (cord exits back of unit)
 - ☐ 3L Bag Tilt Kit [5014126]
 - ☐ Pedestal Mount & Bracket Kit [5012245]*
- **UNIT FOR MOUNTING ON AN EQUIPMENT STAND; STAND INCLUDED** (cord exits bottom of unit)
 - ☐ GCX Light Duty Roll Stand for Devices & Bracket Kit (MOUNT TO GCX EQUIPMENT STAND; STAND INCLUDED) [5012246]
- **UNIT FOR MOUNTING ON AN EQUIPMENT STAND; STAND NOT INCLUDED** (cord exits bottom of unit)
 - ☐ Equipment Stand Bracket Kit (MOUNT TO EQUIPMENT STAND OR MAST; STAND NOT INCLUDED) [5012735]
- **WALL MOUNTED UNIT** (cord exits bottom of unit)
 - ☐ 3L Bag Tilt Kit [5014129]
 - ☐ Horizontal Wall Mount Bracket Kit (ONE [1] GCX HORIZONTAL RAIL INCLUDED) [5012734]
 - ☐ Vertical Wall Channel Mount & Bracket Kit (ONE [1] GCX VERTICAL RAIL INCLUDED) [5012241]*
 - ☐ Vertical Wall Channel Mount Bracket Kit (GCX VERTICAL RAIL NOT INCLUDED) [5012288]*

ivNow-2

- **COUNTER TOP UNIT** (cord exits back of unit)
 - ☐ 3L Bag Tilt Kit [5014127]
 - ☐ Pedestal Mount & Bracket Kit [5012245]*
- **WALL MOUNTED UNIT** (cord exits bottom of unit)
 - ☐ 3L Bag Tilt Kit [5014130]
 - ☐ Horizontal Wall Mount Bracket Kit (ONE [1] GCX HORIZONTAL RAIL INCLUDED) [5012734]
 - ☐ Vertical Wall Channel Mount & Bracket Kit (ONE [1] GCX VERTICAL RAIL INCLUDED) [5012241]*
 - ☐ Vertical Wall Channel Mount Bracket Kit (GCX VERTICAL RAIL NOT INCLUDED) [5012288]*
 - ☐ GCX Heavy Duty Roll Stand for Devices & Bracket Kit (MOUNT TO GCX EQUIPMENT STAND; STAND INCLUDED) [5013312]

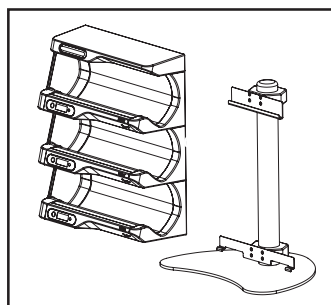
ivNow-3

- **COUNTER TOP UNIT** (cord exits back of unit)
 - ☐ 3L Bag Tilt Kit [5014128]
 - ☐ Pedestal Mount & Bracket Kit [5012245]*
 - ☐ Pedestal Mount Bracket Kit (PEDESTAL NOT INCLUDED) [5012287]*
- **WALL MOUNTED UNIT** (cord exits bottom of unit)
 - ☐ 3L Bag Tilt Kit [5014131]
 - ☐ Horizontal Wall Mount Bracket Kit (TWO [2] GCX HORIZONTAL RAILS INCLUDED) [5012242]*
 - ☐ Vertical Wall Channel Mount & Bracket Kit (ONE [1] GCX VERTICAL RAIL INCLUDED) [5012241]*
 - ☐ Vertical Wall Channel Mount Bracket Kit (GCX VERTICAL RAIL NOT INCLUDED) [5012288]*
 - ☐ GCX Heavy Duty Roll Stand for Devices & Bracket Kit (MOUNT TO GCX EQUIPMENT STAND; STAND INCLUDED) [5013312]

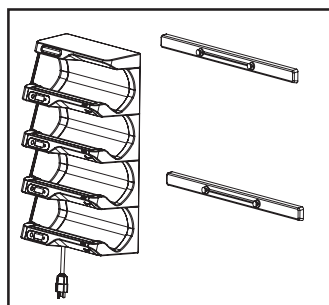
ivNow-4 THROUGH -6

- **WALL MOUNTED UNIT** (cord exits bottom of unit)
 - ☐ Horizontal Wall Mount Bracket Kit (TWO [2] GCX HORIZONTAL RAILS INCLUDED) [5012242]*
 - ☐ Vertical Wall Channel Mount & Bracket Kit (ONE [1] GCX VERTICAL RAIL INCLUDED) [5012241]*
 - ☐ Vertical Wall Channel Mount Bracket Kit (GCX VERTICAL RAIL NOT INCLUDED) [5012288]*

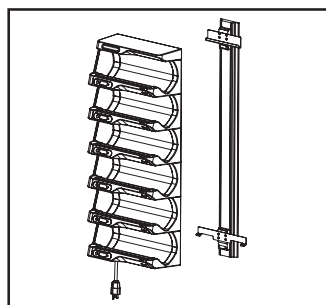
* See equipment diagram below



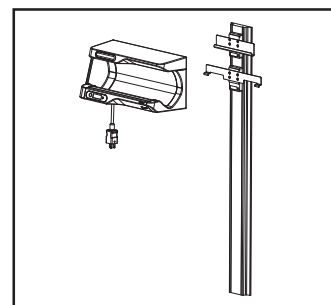
Pedestal Mount & Bracket Kit
5012245
(Brackets only 5012287)



Horizontal Wall Mount Bracket
Kit 5012242 (ivNow-3 to -6)

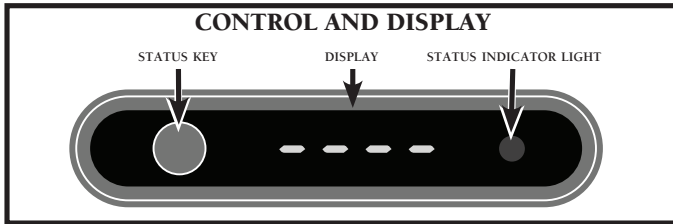


Vertical Wall Channel Mount Bracket Kit 5012241
Brackets only 5012288
(ivNow-6 shown above)



(ivNow-1 shown above)

CONTROL FEATURES



CONTROL PANEL KEY

STATUS KEY

Press to show the set temperature.

Hold for 2 seconds to see how long the fluid has been at set temperature. The first hour is indicated in minutes and seconds (MM:SS) and subsequent time is indicated in hours and minutes (HH:MM) for the first 24 hours. After 24 hours, time is displayed in days and fraction of day (DD.DD). The timer stops after 30.0 days. The time a fluid is held at temperature will remain in memory until a new bag is placed in the module. The word “dAtE” will flash intermittently when a bag has been warming in a unit for 14 days or longer. Remove fluid from cavity and check expiration date. Discard fluid if expired.

NOTE: The factory default set temperature is 40°C (104°F).

DISPLAY STATUS INDICATORS

DISPLAY

If no product is detected, the display will show 4 dashes (----).

When a product is first detected, a single dash will scroll around the display for 5 seconds while the unit is sensing the product temperature.

NOTE: Placing a warmed fluid bag with a temperature higher than the set-point in the module will cause the display to flash the actual temperature. The display will continue flashing until the temperature falls below the set point. Do not use fluid bag until display stops flashing.

During normal operation, the actual temperature is shown on the display.



In the event of an error, the display will show the error code and the error must be cleared by the user. See the “Troubleshooting” section of this manual for instructions.

STATUS INDICATOR LIGHT

The green STATUS INDICATOR will illuminate when the bag reaches set-temperature (+0/-2°C [+0/-3°F]).

TEMPERATURE FORMAT SELECTION

With the power turned on and no product loaded into the warming cavity, hold the STATUS button for 5 seconds to see the current temperature scale (°F/°C). While the scale is displayed, press the STATUS key to toggle the temperature scale. Do not place a bag in the module until the four dashes (----) display or the temperature format changes will not be saved.

 DANGER	
	DO NOT use this warming cabinet in the presence of flammable anesthetic mixture (with air or with oxygen or nitrous oxide). THIS COULD RISK AN EXPLOSION!

CAUTION
THIS UNIT HAS NOT BEEN APPROVED FOR WARMING OF BLOOD OR BLOOD PRODUCTS.

NOTE
Do not operate ivNow unit over a warm surface, appliance or heat source. Ambient temperature should be no warmer than 10°F (6°C) below the set point temperature.

 WARNING
REFER TO FLUID MANUFACTURER'S LABELING FOR RECOMMENDED WARMING PROCEDURES

INSTALLATION

INSTALLATION/MOUNTING OF UNIT

ivNow modular units can be installed in a variety of ways. A single or double unit (ivNow-1 or ivNow-2) can be used on a countertop without any special mounting hardware. A two or three module unit (ivNow-2 or ivNow-3) can be placed on a countertop using a pedestal stand. (See Figure 1.) From one (1) to six (6) modules can be wall-mounted using wall mount hardware. (See Figure 2.) One (1) module can also be mounted on a mobile equipment pole.

NOTE: Individual ivNow units cannot be stacked. Units with multiple stacked module configurations are available from the factory only.

See the separate instructions provided with your pedestal, mobile equipment pole, or wall mounting kit for installation guidance.

Figure 1 - Pedestal Stand

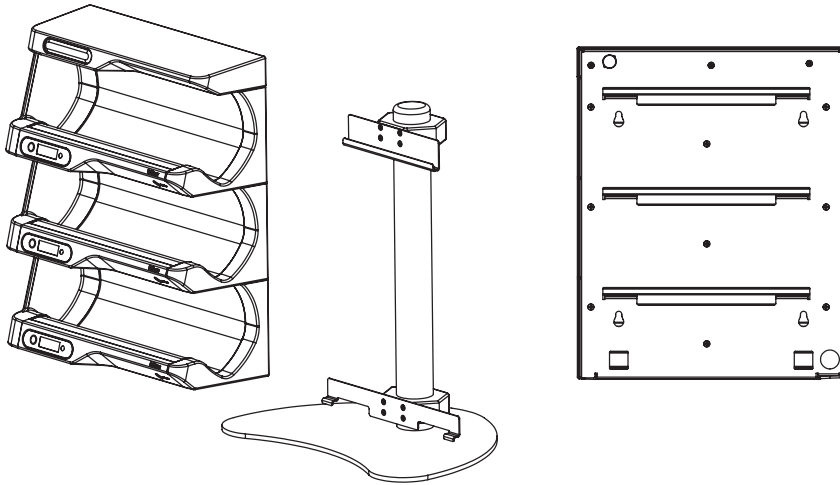
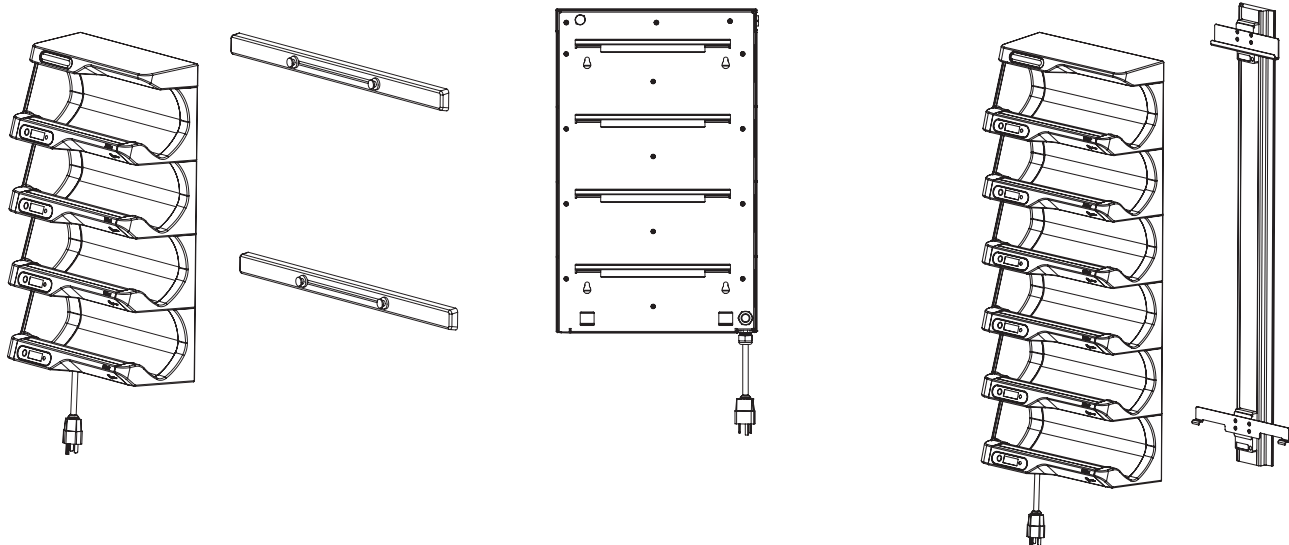


Figure 2 - Wall Mounting Options



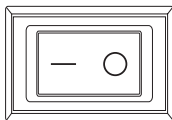
OPERATION PROCEDURES

ivNow CAPACITY INFORMATION

The ivNow warming module accommodates fluids packaged in bags. Each warming module cradles solution bags in 0.5, 1, 2 & 3 liter sizes.

OPERATION OF UNIT

1. The appliance should be plugged into an appropriate hospital grade receptacle for a 120V (NEMA 5-15P) appliance.
2. Turn ON the power switch located on the left side of the appliance. It is a rocker switch with ON (I) and OFF (O) markings. When on, the control display will be powered. The plate will not heat until a bag is placed in module.



3. ACTIVATE CONTROL BY PLACING PLASTIC BAG OF FLUID IN MODULE. SEE FIGURE 1.

Make sure the bag touches the sensor in the middle of metal plate. (See Figure 2 for illustration of incorrect bag placement.) When product is first detected, a single dash will scroll around the display for 5 seconds while the unit is sensing the product temperature. The Smart Sensor will calculate the appropriate heating curve to heat the fluid to the cavity set-point.

NOTE: The warm-up stabilization time will vary slightly depending on the starting bag temperature and ambient room temperature. The chart in Figure 3 shows the heating of a 1 liter bag starting at 21°C (70°F) warmed to a set-point of 40°C (104°F) in a room with 21°C (70°F) ambient temperature.

4. The display will continue to show the current bag temperature as it heats the fluid.
5. The green status indicator will illuminate when the bag is within +0/-2°C (+0/-3°F) of the set-point temperature.
6. Press and hold STATUS key for 2 seconds to see how long the fluid has been at set temperature. See "Control Panel Key: Status Key" on previous page for more instructions.

CAUTION: If the warmer has failed to heat, is on but display and lights do not illuminate, or if error messages are displayed, discard the fluid and see the Troubleshooting Guide in this manual. If the error continues, contact your service representative.

NOTE: In the event that fluid should spill inside the module, unplug the unit to prevent and electrical shock hazard. Wipe excess fluid from module immediately. Refer to qualified service personnel. Qualified service personnel should remove the module control and remove any remaining liquid. Perform necessary hospital electrical safety checks before returning the unit to operation.

Figure 1 - Load bag



Figure 2 - Incorrect placement of bag: Product does not touch sensor in middle of heating plate.

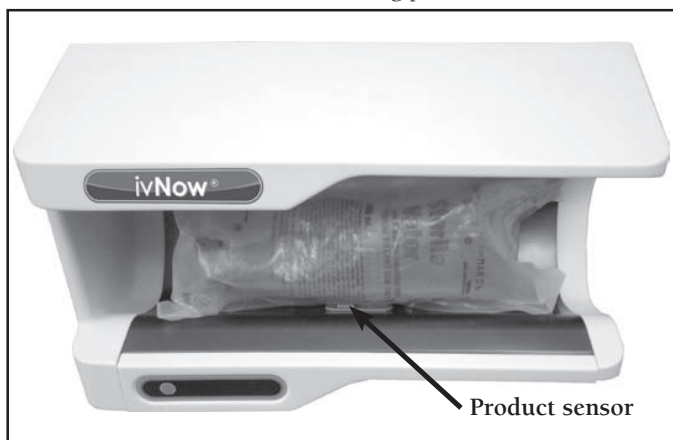
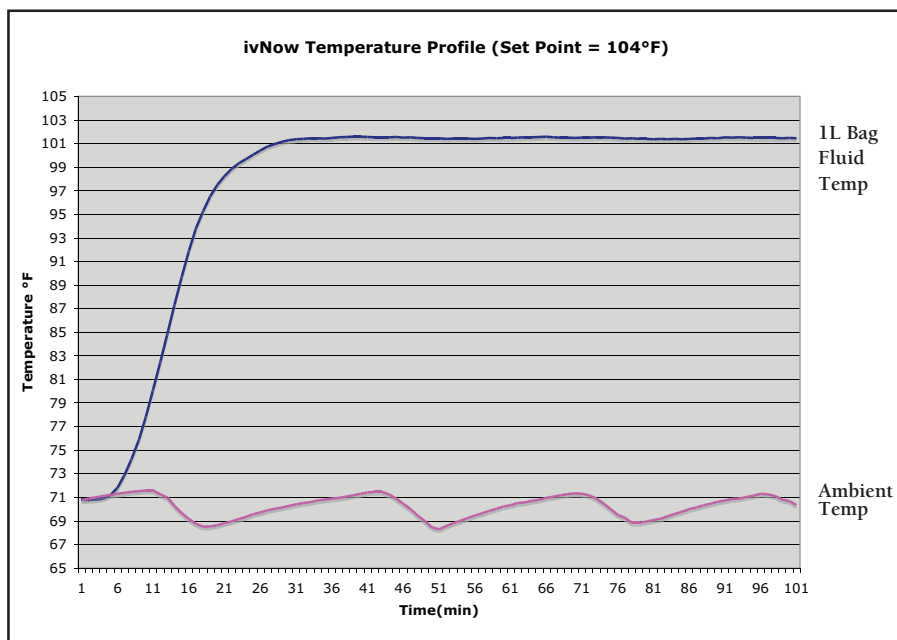


Figure 3



CARE AND CLEANING

The cleanliness and appearance of this equipment will contribute considerably to its operating efficiency. Make certain the module is kept free of any debris that may accumulate. Good equipment that is kept clean works better and lasts longer.

CLEAN THE UNIT REGULARLY:

1. Turn the unit off.
2. Disconnect the module from the power source.
3. Wipe the metal, plastic, and control surfaces of the module with a cloth dampened with isopropyl alcohol or 10% bleach solution to clean and disinfect the unit. Avoid the use of abrasive or corrosive cleaning compounds. Avoid contact with the electrical connections and electrical components.
4. Wipe surfaces with a cloth dampened with clean, warm water.
5. Wipe dry with a clean cloth.

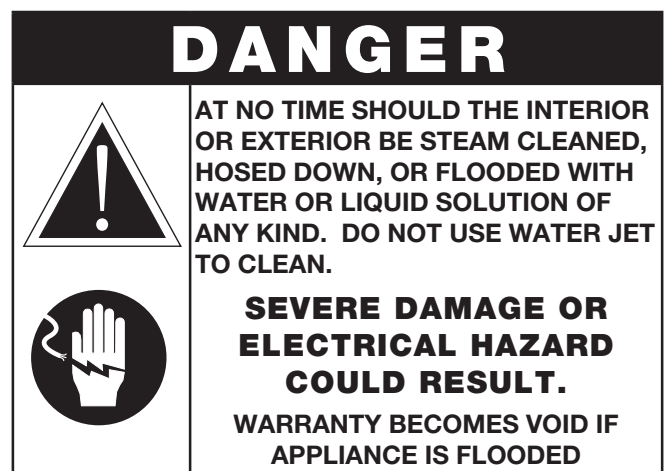
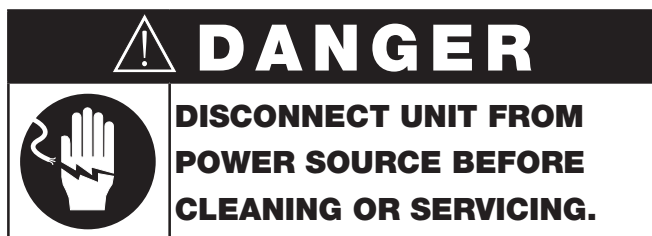


Always follow appropriate state or local health (hygiene) regulations regarding all applicable cleaning and sanitation requirements.

NOTE: In the event that fluid should spill inside the module, unplug the unit to prevent an electrical shock hazard. Wipe excess fluid from module immediately. Refer to qualified service personnel. Qualified service personnel should remove the module control and remove any remaining liquid. Perform necessary hospital electrical safety checks before returning the unit to operation.

ANNUAL PREVENTATIVE MAINTENANCE

1. Ensure that the correct Operation and Care Manual is available to all users.
2. Ensure that all users have been properly trained in unit's operation.
3. Do not exceed the unit's capacity.
4. Inspect condition of plug and cord. Replace if damaged.
5. Clean dust from the unit.
6. Check condition of pedestal or wall mounting hardware. Ensure mounting screws and assembly are secure.
7. Check control panel overlay condition. Are there any tears or excessive wear on the graphic? Does the control work properly when buttons are pushed?
8. Check that all control LEDs light up. Test by turning the unit off and then on. All LEDs illuminate for one second at start-up.
9. Contact Service for immediate repair if any problems exist.



(Listed as Ordinary Equipment.)



If your unit is not operating properly, check the following before calling your authorized service agent. Check the power applied to the unit. Is the plug in outlet? Check to make sure the power switch, located on the side of the unit, is in the ON (I) position. Has the high limit manual reset tripped? If so, reset. (See “Manual Reset Instructions” below.)

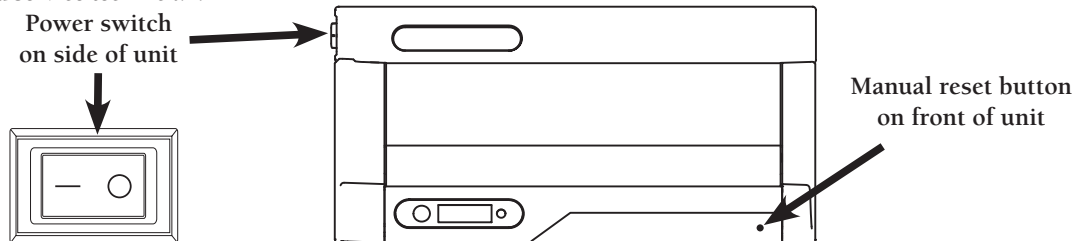
If temperature calibration adjustment is required, call Pedigo Service for proper instruction.

Do not attempt to repair or service beyond this point. Contact manufacturer for nearest authorized service agent. Repairs made by any other service agent without prior authorization by manufacturer will void the warranty on the unit.

TROUBLE SHOOTING GUIDE

ERROR	DESCRIPTION	ACTION REQUIRED
E-10	Temperature Sensor 1 Short	<ul style="list-style-type: none"> Press Status Key to clear error code. If error persists, the sensor switch assembly should be replaced by a qualified service technician. Contact Service.
E-11	Temperature Sensor 1 Open	
E-20	Temperature Sensor 2 Short	
E-21	Temperature Sensor 2 Open	
E-P0	Plate Temperature Sensor Shorted	
E-P1	Plate Temperature Sensor Open	
E-98	Temperature Delta Error	<ul style="list-style-type: none"> Temperature of fluid bag sensors 1 and 2 differ by more than 3°F (1.7°C). Remove fluid bag and allow unit to cool down. Verify that fluid bag sensor is clean and operating correctly. Press Status Key to clear error code. If error persists, the sensor switch assembly should be replaced by a qualified service technician. Contact Service.
E-31	Product Over Temperature and the unit has been actively heating	<ul style="list-style-type: none"> Press Status Key to clear error code. Remove fluid bag and allow unit to cool down. Inspect fluid and discard if necessary. If error persists after cool down and reset, the sensor switch assembly or lower control assembly should be replaced by a qualified service technician. Contact Service.
E-50	Analog to Digital Convertor Error	<ul style="list-style-type: none"> Press Status Key to clear error code. Remove fluid bag and allow unit to cool down. Inspect fluid and discard if necessary. If error persists after cool down and reset, the lower control assembly should be replaced by a qualified service technician. Contact Service.
E-FO	Flash Write Error	
E-F1	Flash Erase Error	
E-F2	Flash Value Error	<ul style="list-style-type: none"> Press status key to clear error code. This error is acceptable upon initial start up. Unit will self-correct.
E-70	Low voltage flag triggered	<ul style="list-style-type: none"> Check voltage at outlet with volt meter. Correct voltage if incorrect voltage being supplied. If error persists, the lower control assembly should be replaced by a qualified service technician. Contact Service.
Unit doesn't power on		<ul style="list-style-type: none"> Is unit plugged into outlet? Check outlet voltage. Check voltage rating on equipment rating tag. Ensure both match. Check manual reset button. Reset if needed. (See instructions below.) Allow unit to cool down to reset auto hi-limit. Check fuses. Replace if blown. If unit still does not power on, contact Service.
Unit powers on and off when loaded and power switch is turned on		<ul style="list-style-type: none"> Remove from service. Contact Service.

Manual Reset Instructions: Locate the manual reset button on front of unit. Using a pen, screwdriver or other long, thin implement, firmly push reset button. You will hear an audible click when the button is reset. If reset button trips again while unit is running, contact a qualified service technician.



DANGER



**DISCONNECT UNIT FROM
POWER SOURCE BEFORE
CLEANING OR SERVICING.**

CAUTION

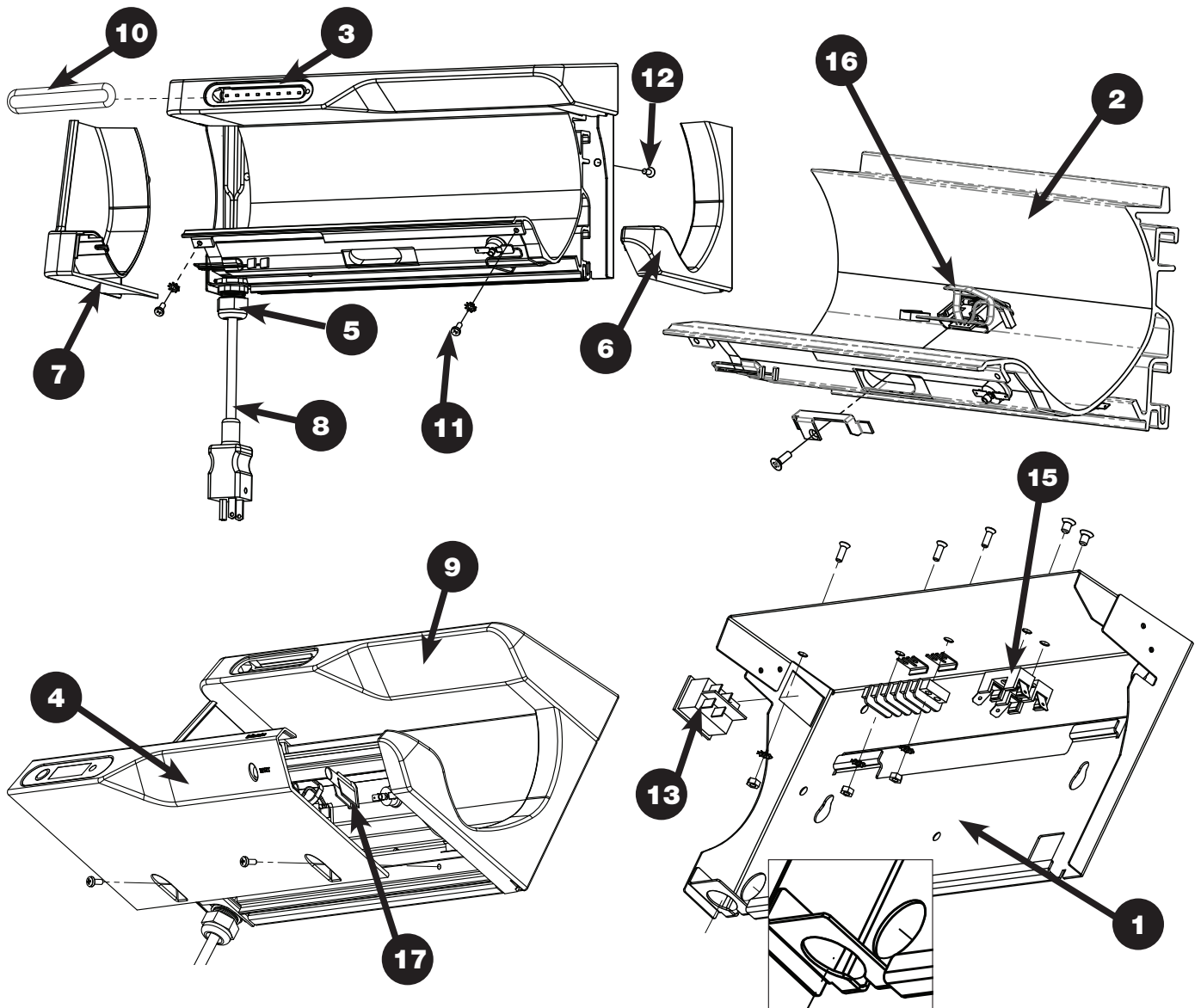
**THIS SECTION IS PROVIDED FOR THE ASSISTANCE
OF QUALIFIED SERVICE TECHNICIANS ONLY AND
IS NOT INTENDED FOR USE BY UNTRAINED OR
UNAUTHORIZED SERVICE PERSONNEL.**

ivNow SERVICE PARTS LIST

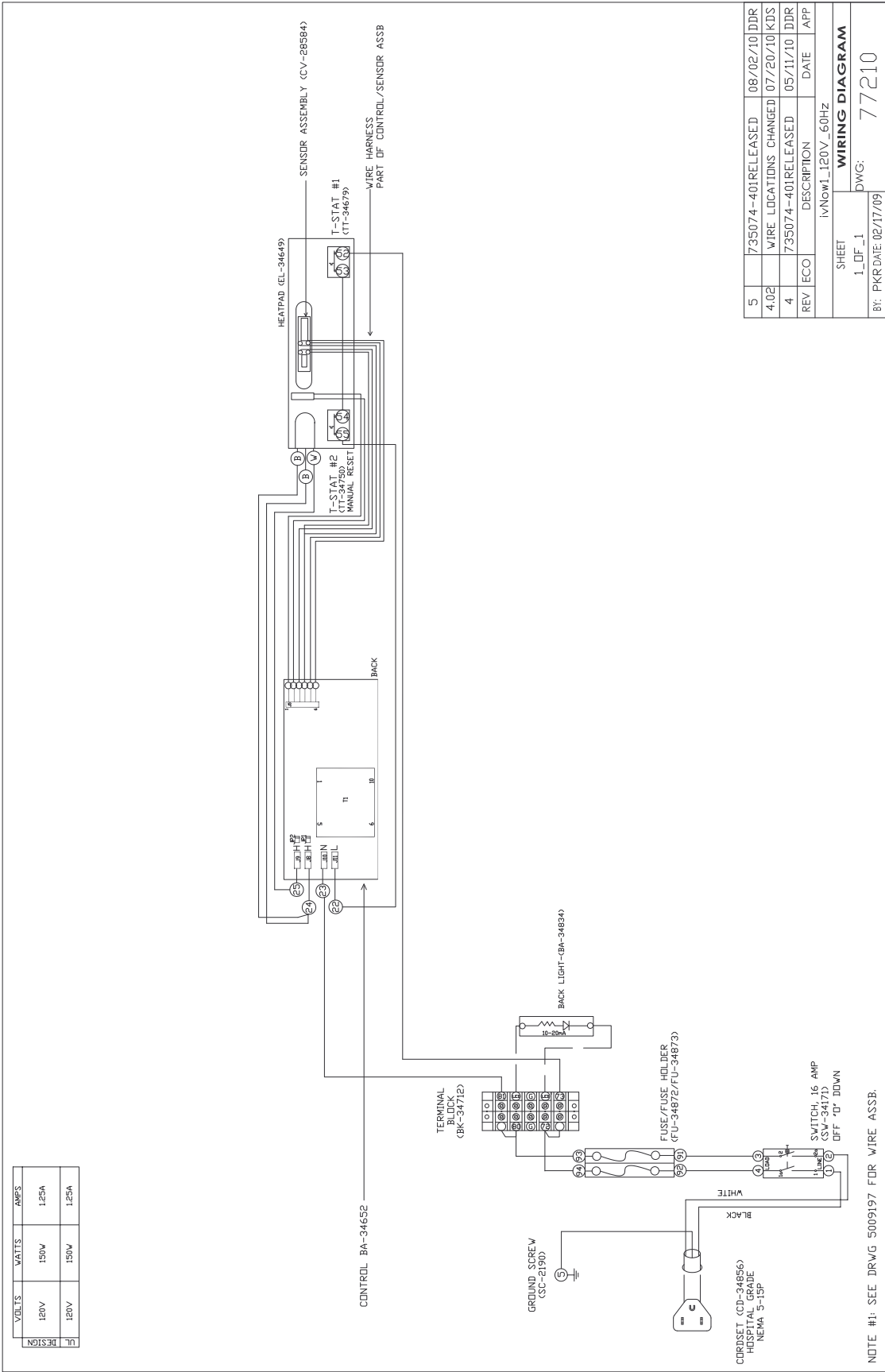
ivNow FLUID WARMING MODULE (ivNow-1 shown)

LOC	DESCRIPTION	QTY	ivNow	LOC	DESCRIPTION	QTY	ivNow	
1.	REAR COVER	ivNow-1	1	1009728	7.	COVER, LEFT END	1	CV-28580
		ivNow-2*	1	1009727	8.	CORDSET 120V	1	CD-34856
		ivNow-3*	1	1009726	9.	TOP COVER	1	CV-28578
		ivNow-4*	1	1009725	10.	ivNow LABEL	1	LA-28583
		ivNow-5*	1	1009724	11.	SCREW, M4 X 10MM PH PAN HD	2	SC-22273
		ivNow-6*	1	1009723	12.	SCREW, KA40X12, NF PHIL	6	SC-28587
2.	MODULE ASSEMBLY includes sensor assembly, heater pad and hi-limits	1	5008986	13.	POWER SWITCH	1	SW-34171	
3.	BACK LIGHT 120V	1	BA-34834	14.	FUSE* F1, F2: 250V; 10AMPS; 0.0093Ω COLD RESISTANCE; FAST-ACTING FUSE	2	FU-34872	
4.	CONTROL PANEL ASSEMBLY 120V with logo	1	5013868	15.	FUSE HOLDER	1	FU-34873	
	120V without logo	1	5012152	16.	SENSOR ASSEMBLY	1	CV-28584	
5.	CORD STRAIN RELIEF BUSHING	1	BU-3964	17.	RESET BUTTON	1	CV-29140	
6.	COVER, RIGHT END	1	CV-28579	*NOT SHOWN				

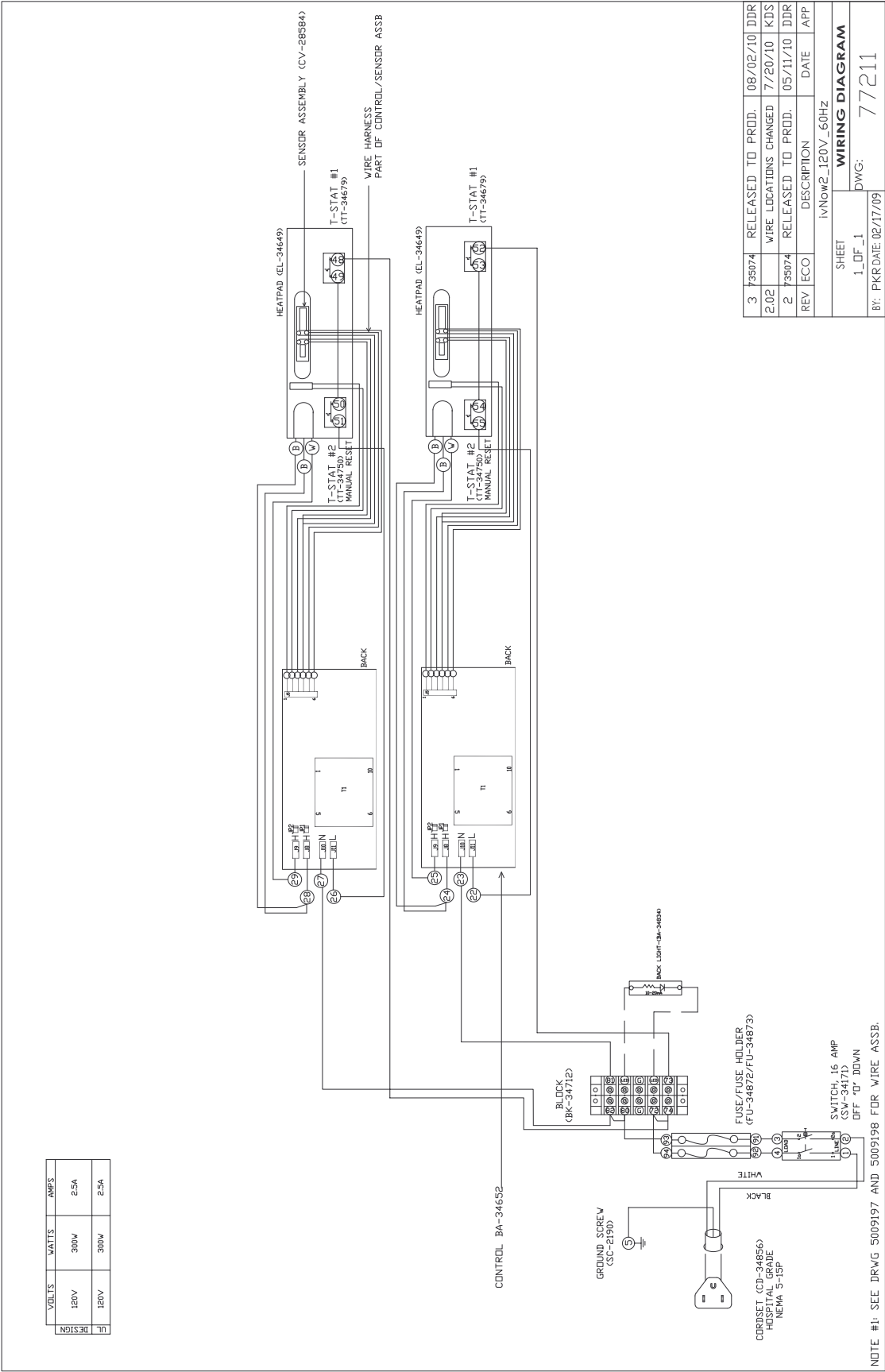
*NOT SHOWN



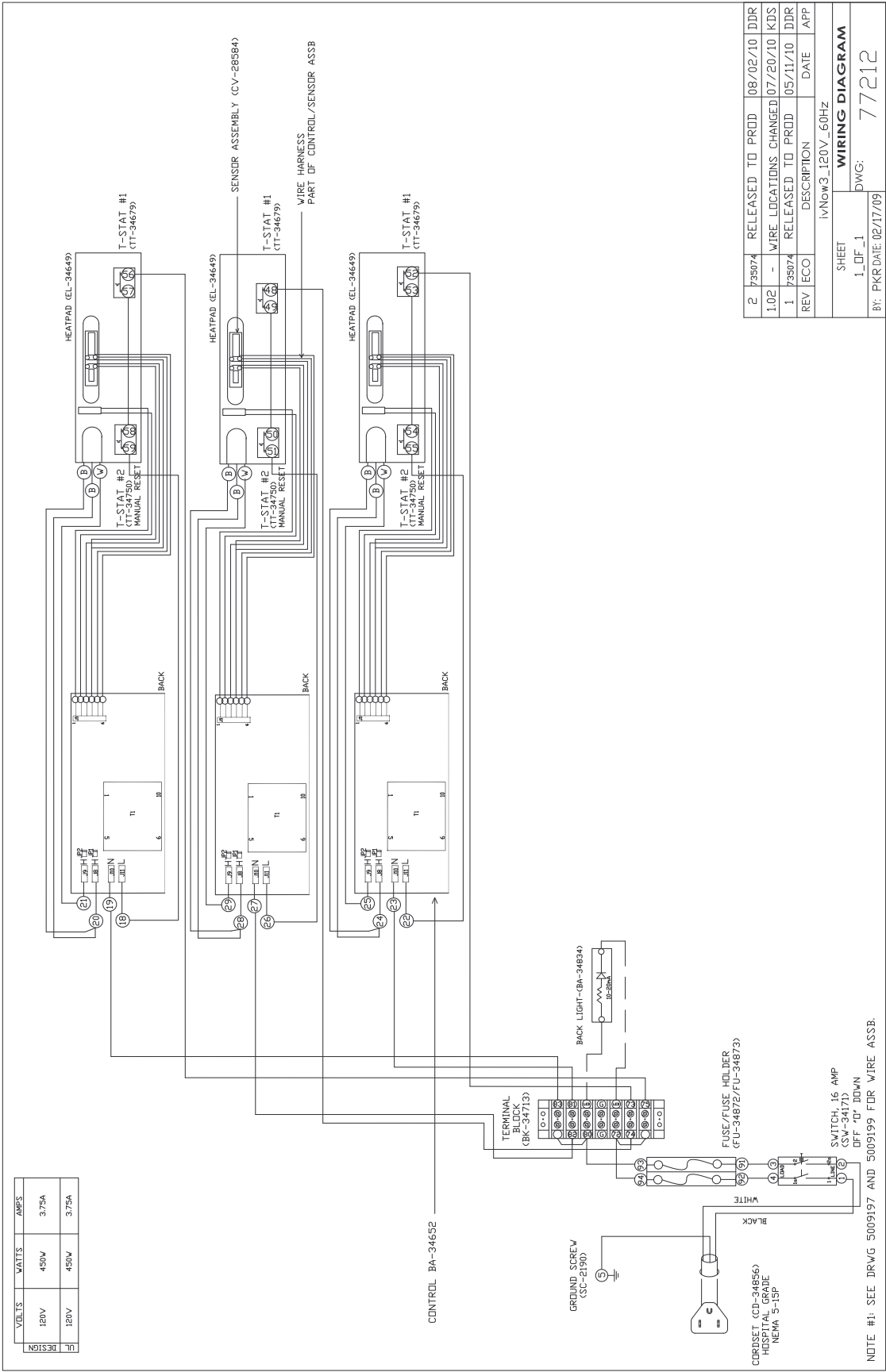
ivNow-1 120V Wiring Diagram



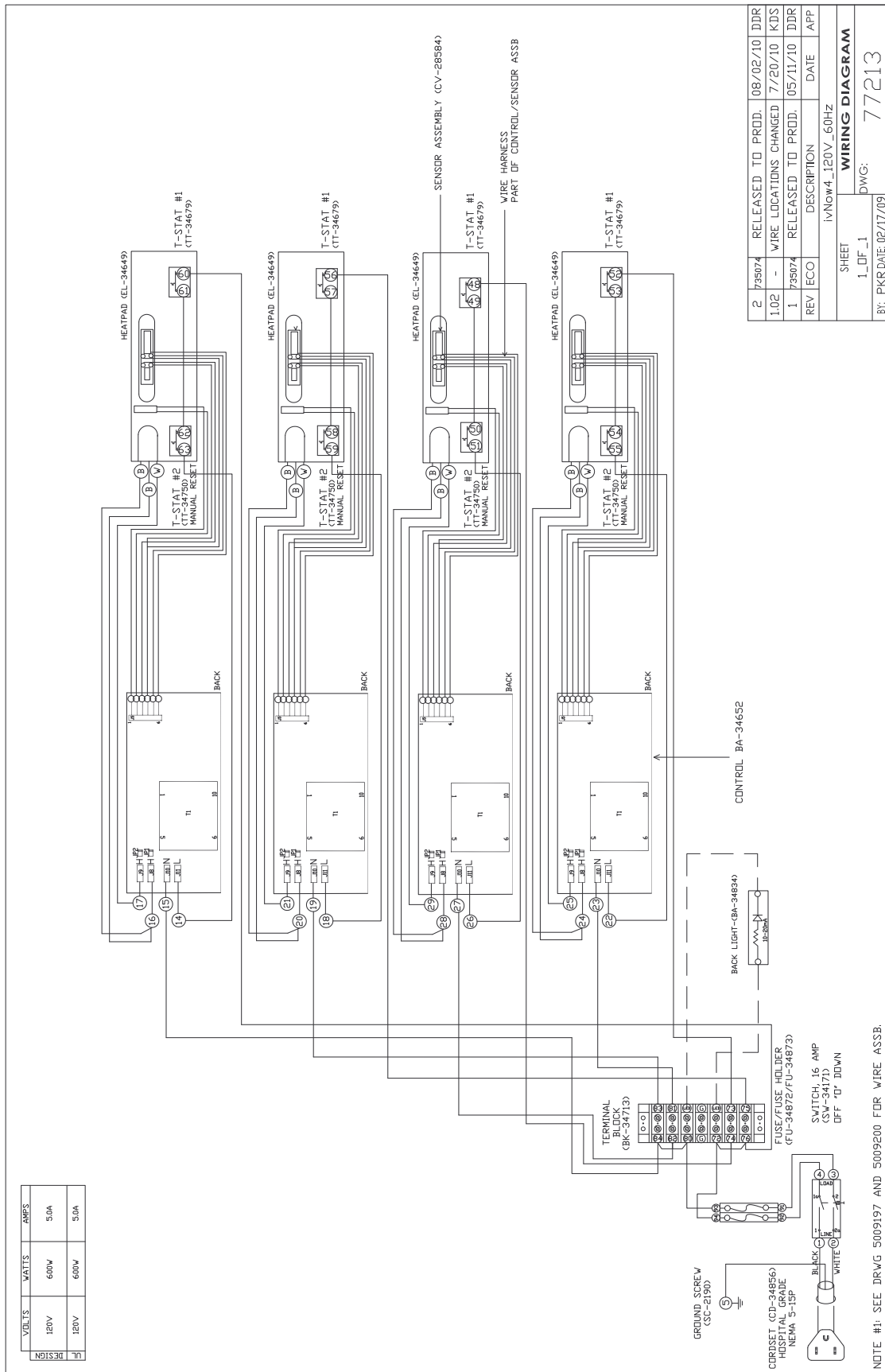
ivNow-2 120V Wiring Diagram



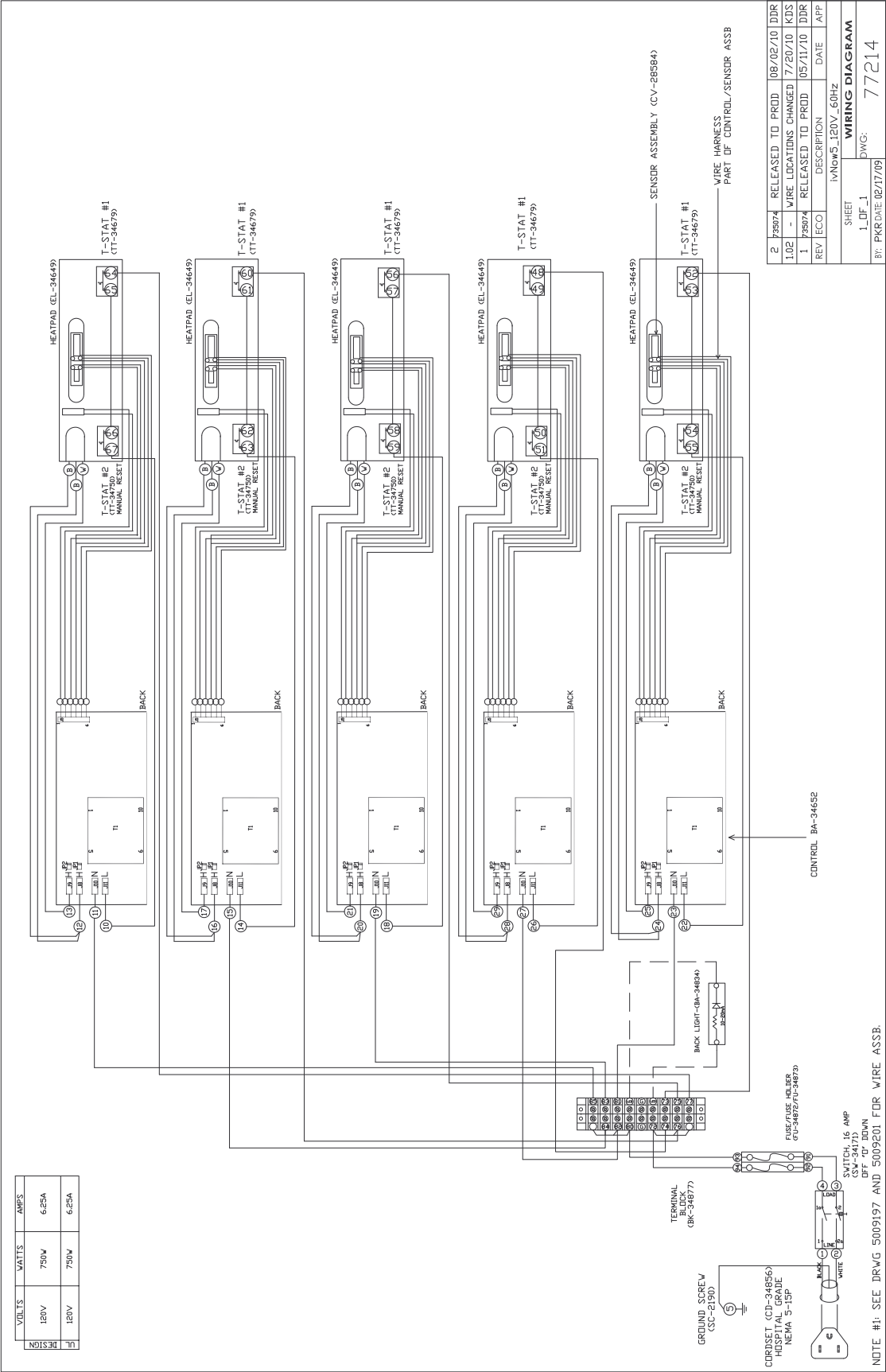
ivNow-3 120V Wiring Diagram



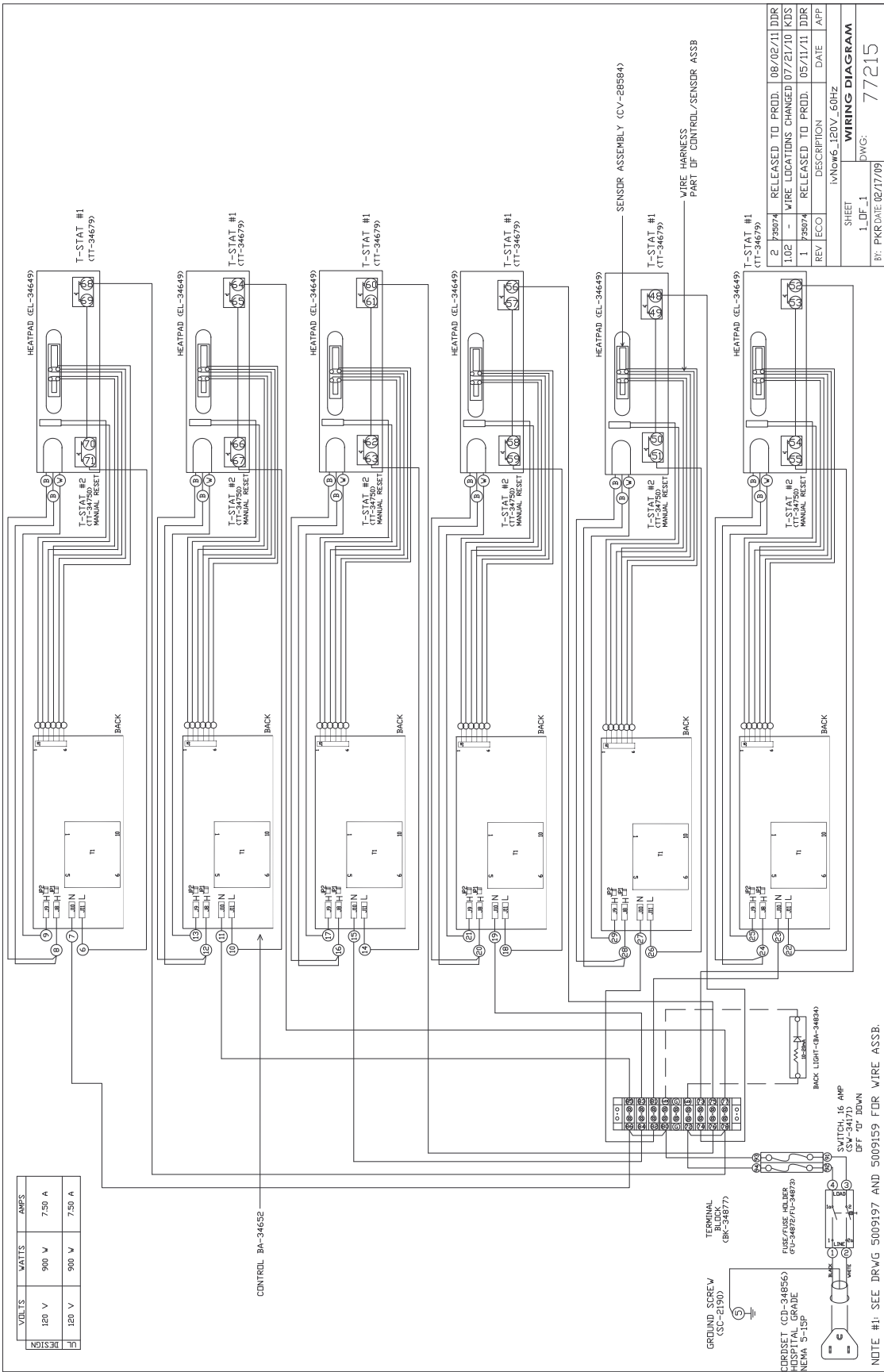
ivNow-4 120V Wiring Diagram



ivNow-5 120V Wiring Diagram



ivNow-6 120V Wiring Diagram



TRANSPORTATION DAMAGE AND CLAIMS



All Pedigo Products, Inc. equipment is sold F.O.B. shipping point, and when accepted by the carrier, such shipments become the property of the consignee.

Should damage occur in shipment, it is a matter between the carrier and the consignee. In such cases, the carrier is assumed to be responsible for the safe delivery of the merchandise, unless negligence can be established on the part of the shipper.

1. Make an immediate inspection while the equipment is still in the truck or immediately after it is moved to the receiving area. Do not wait until after the material is moved to a storage area.
2. Do not sign a delivery receipt or a freight bill until you have made a proper count and inspection of all merchandise received.
3. Note all damage to packages directly on the carrier's delivery receipt.
4. Make certain the driver signs this receipt. If he refuses to sign, make a notation of this refusal on the receipt.
5. If the driver refuses to allow inspection, write the following on the delivery receipt:

Driver refuses to allow inspection of containers for visible damage.
6. Telephone the carrier's office immediately upon finding damage, and request an inspection. Mail a written confirmation of the time, date, and the person called.
7. Save any packages and packing material for further inspection by the carrier.
8. Promptly file a written claim with the carrier and attach copies of all supporting paperwork.

We will continue our policy of assisting our customers in collecting claims which have been properly filed and actively pursued. We cannot, however, file any damage claims for you, assume the responsibility of any claims, or accept deductions in payment for such claims.

PEDIGO PRODUCTS, INC. LIMITED WARRANTY

Pedigo Products, Inc. warrants to the original purchaser that any original part that is found to be defective in material or workmanship will, at our option, subject to provisions hereinafter stated, be replaced with a new or rebuilt part.

The labor warranty remains in effect one (1) year from installation or fifteen (15) months from the shipping date, whichever occurs first.

The parts warranty remains in effect one (1) year from installation or fifteen (15) months from the shipping date, whichever occurs first.

This warranty does not apply to:

1. Calibration
2. Equipment damage caused by accident, shipping, improper installation or alteration.
3. Equipment used under conditions of abuse, misuse, carelessness or abnormal conditions including equipment subjected to harsh or inappropriate chemicals including but not limited to compounds containing chloride or quaternary salts, poor water quality, or equipment with missing or altered serial numbers.
4. Any losses or damage resulting from malfunction, including loss of contents or consequential or incidental damages of any kind.
5. Equipment modified in any manner from original model, substitution of parts other than factory authorized parts, removal of any parts including legs, or addition of any parts.
6. Collateral or incidental damage as a direct result of servicing equipment built into a wall structure is not covered under warranty. It is the responsibility of the owner to bear all expense related to structural repairs including, but not limited to, external electrical connections and wiring, and the removal or replacement of caulk, grout, tile, or wall covering of any kind. A service access panel for built-in equipment installations is strongly recommended.

This warranty is exclusive and is in lieu of all other warranties, expressed or implied, including the implied warranties of merchantability and fitness for purpose. In no event shall the Company be liable for loss of use, loss of revenue, or loss of contents or revenue, or for indirect or consequential damages. This warranty is in lieu of all other warranties expressed or implied and Pedigo Products, Inc. neither assumes or authorizes any persons to assume for it any other obligation or liability in connection with Pedigo Products, Inc. equipment.

Pedigo Products, Inc.

Record the model and serial numbers of the unit for easy reference. Always refer to both model and serial numbers in your correspondence regarding the unit.

Model: _____
Serial Number: _____
Purchased From: _____
Date Installed: _____ Voltage: _____



Pedigo Products, Inc.
4000 S.E. Columbia Way • Vancouver, WA 98661 • U.S.A.
Phone: 800.822.3501 • Fax: 360.696.1700 • www.pedigo-usa.com